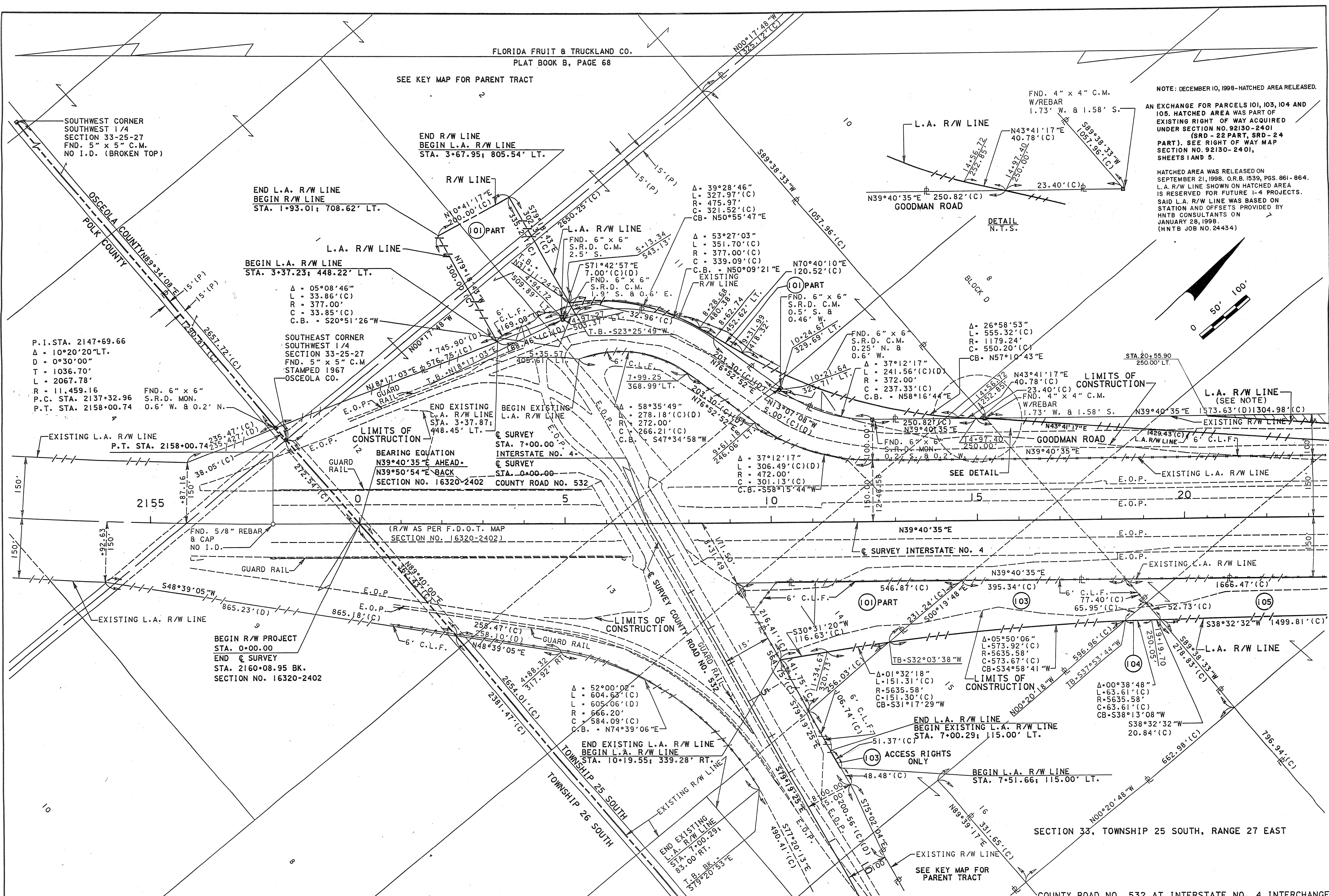


SEE KEY MAP FOR PARENT TRACT

NOTE: DECEMBER 10, 1998 - HATCHED AREA RELEASED.

AN EXCHANGE FOR PARCELS 101, 103, 104 AND 105. HATCHED AREA WAS PART OF EXISTING RIGHT OF WAY ACQUIRED UNDER SECTION NO. 92130-2401 (SRD - 22 PART, SRD - 24 PART). SEE RIGHT OF WAY MAP SECTION NO. 92130-2401, SHEETS 1 AND 5.

HATCHED AREA WAS RELEASED ON SEPTEMBER 21, 1998. O.R.B. 1539, PGS. 861-864. L.A. R/W LINE SHOWN ON HATCHED AREA IS RESERVED FOR FUTURE I-4 PROJECTS. SAID L.A. R/W LINE WAS BASED ON STATION AND OFFSETS PROVIDED BY HNTB CONSULTANTS ON JANUARY 28, 1998. (HNTB JOB NO. 24434)



RIGHT OF WAY MAP

OSCEOLA COUNTY

APPROVED BY	DATE	ADD L.A. R/W LINE &	S. WALKER	12-23-98	BY	DATE	F.A. PROJECT NO. 92130-2421
RECORDING DATA		RECORDING DATA	K. Johns	2-20-98	PRELIM	C. WHITE	5/12/95
REVISION		REVISION	K. Johns	2-13-98	FINAL	A. SCHAEFER	5/12/95
CHAIRMAN-BOARD OF COUNTY COMMISSIONERS		ADDED TRANSFER NOTE	S. WALKER	2-6-97	CHECKED	D. BARTON	5/12/95
CLERK OF CIRCUIT COURT		REVISION					

MAPS PREPARED BY
DYER, RIDDLE, MILLS & PRECOURT, INC.
W.P.I. NO. 5147340
SECTION 92130-2421

FIELD BOOK NO. 5
94/24 94/25 95/3
SCALE: 1"=100'
SHEET 3 OF 6